

Další významné deriváty aminokyselin

Trp → melatonin

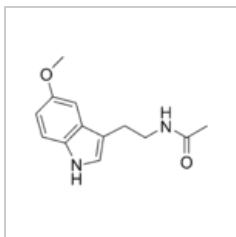
Phe a Tyr → hormony štítné žlázy, melanin

Gly → hem, *puriny*, kreatin, konjugace se žlučovými kyselinami

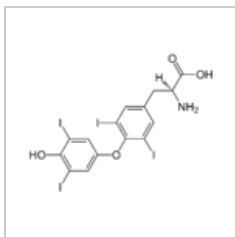
Arg a Ornitin → kreatin, polyaminy (*spermidin, spermin*)

Gly, Glu, Asp → *puriny* a pyrimidiny

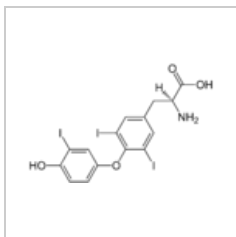
Cys → taurin



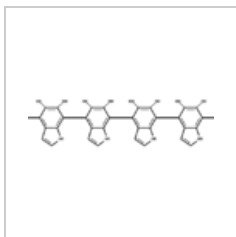
Melatonin



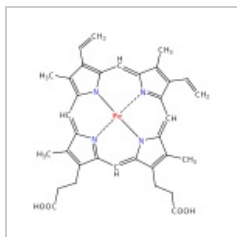
Tyroxin



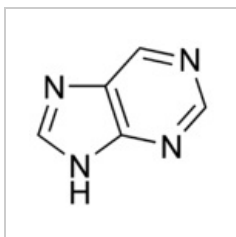
Trijodtyronin



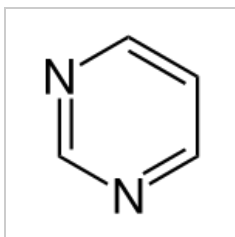
Část struktury
polymeru melaninu



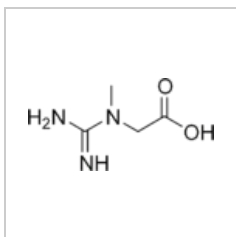
Hem



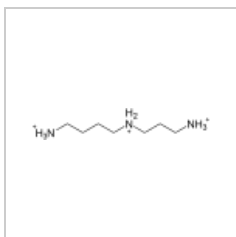
Purin



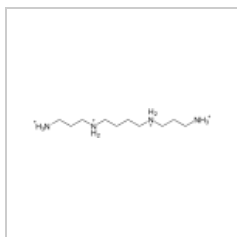
Pyrimidin



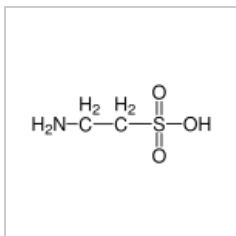
Kreatin



Spermidin



Spermin



Taurin